



MONTHLY SUMMARY OF STATISTICS

VICTORIA

EMBARGO: 11:30AM (CANBERRA TIME) THURS 22 JULY 1999

CONTENTS

	<i>page</i>
Notes	2
Selected features	3
TABLES	
List of tables.....	4
Demography.....	5
Labour.....	6
Wages.....	9
Prices.....	10
Meat production.....	11
Building.....	12
Finance.....	15
Retail.....	16
Trade.....	17
Tourism.....	18

- For more information about these and related statistics, contact Information Services on 03 9615 7755 or refer to the back cover of this publication.

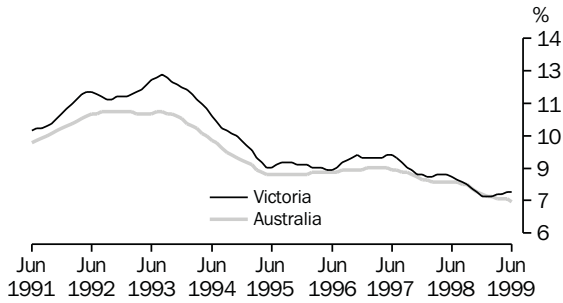
NOTES

FORTHCOMING ISSUES	<table border="0"> <thead> <tr> <th style="text-align: left;"><i>ISSUE</i></th> <th style="text-align: left;"><i>RELEASE DATE</i></th> </tr> </thead> <tbody> <tr> <td>July 1999</td> <td>20 August 1999</td> </tr> <tr> <td>August 1999</td> <td>22 September 1999</td> </tr> <tr> <td>September 1999</td> <td>22 October 1999</td> </tr> <tr> <td>October 1999</td> <td>19 November 1999</td> </tr> <tr> <td>November 1999</td> <td>20 December 1999</td> </tr> <tr> <td>December 1999</td> <td>18 January 2000</td> </tr> </tbody> </table>	<i>ISSUE</i>	<i>RELEASE DATE</i>	July 1999	20 August 1999	August 1999	22 September 1999	September 1999	22 October 1999	October 1999	19 November 1999	November 1999	20 December 1999	December 1999	18 January 2000				
<i>ISSUE</i>	<i>RELEASE DATE</i>																		
July 1999	20 August 1999																		
August 1999	22 September 1999																		
September 1999	22 October 1999																		
October 1999	19 November 1999																		
November 1999	20 December 1999																		
December 1999	18 January 2000																		
ABOUT THIS PUBLICATION	<p>The aim of this publication is to provide users with a range of the latest statistics available at the end of each month of issue. Consequently, the dates and periods shown are not always the same for each table, but are in each case the latest figures available at that time.</p>																		
SEASONAL ADJUSTMENT	<p>Seasonal adjustment is a means of removing the estimated effects of normal seasonal variations from economic time series so that the effects of other influences are obvious. Seasonal variations are the systematic (though not necessarily regular) intra-year movements of economic time series. These are often the result of non-economic phenomena, such as climatic changes and regular religious festivals e.g. Christmas and Easter.</p>																		
TREND ESTIMATE	<p>Smoothing seasonally adjusted series produces a measure of trend by removing the impact of the irregular component of the series. The trend estimates are derived by applying a 13-term Henderson weighted moving average to the respective seasonally adjusted series. Readers are reminded that trend estimates are subject to revision as subsequent months' data become available.</p>																		
SYMBOLS AND OTHER USAGES	<table border="0"> <tr> <td>n.a.</td> <td>not available</td> </tr> <tr> <td>n.e.c.</td> <td>not elsewhere classified</td> </tr> <tr> <td>n.p.</td> <td>not available for publication but included in totals where applicable</td> </tr> <tr> <td>n.y.a.</td> <td>not yet available</td> </tr> <tr> <td>p</td> <td>preliminary—figure or series subject to revision</td> </tr> <tr> <td>r</td> <td>figure or series revised since previous issue</td> </tr> <tr> <td>*</td> <td>estimate has a relative standard error greater than 25% and is therefore subject to sampling variability too high for most practical uses</td> </tr> <tr> <td>. .</td> <td>not applicable</td> </tr> <tr> <td>—</td> <td>nil or rounded to zero</td> </tr> </table>	n.a.	not available	n.e.c.	not elsewhere classified	n.p.	not available for publication but included in totals where applicable	n.y.a.	not yet available	p	preliminary—figure or series subject to revision	r	figure or series revised since previous issue	*	estimate has a relative standard error greater than 25% and is therefore subject to sampling variability too high for most practical uses	. .	not applicable	—	nil or rounded to zero
n.a.	not available																		
n.e.c.	not elsewhere classified																		
n.p.	not available for publication but included in totals where applicable																		
n.y.a.	not yet available																		
p	preliminary—figure or series subject to revision																		
r	figure or series revised since previous issue																		
*	estimate has a relative standard error greater than 25% and is therefore subject to sampling variability too high for most practical uses																		
. .	not applicable																		
—	nil or rounded to zero																		

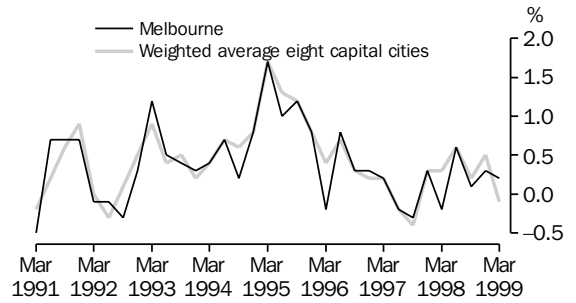
Zia ABBASI,
Regional Director, Victoria

SELECTED FEATURES

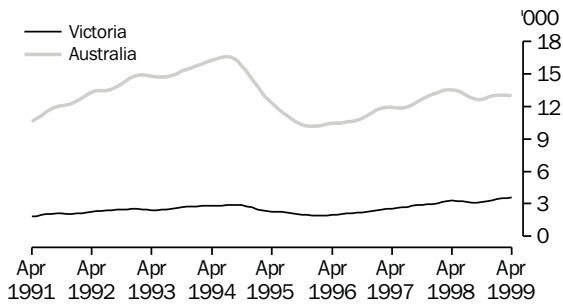
UNEMPLOYMENT RATE, Trend—Monthly



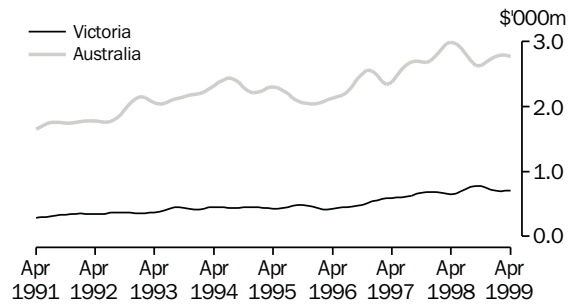
CONSUMER PRICE INDEX, Change from previous quarter



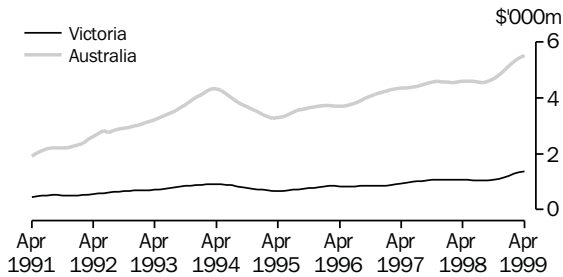
NEW DWELLING UNITS APPROVED, Trend—Monthly



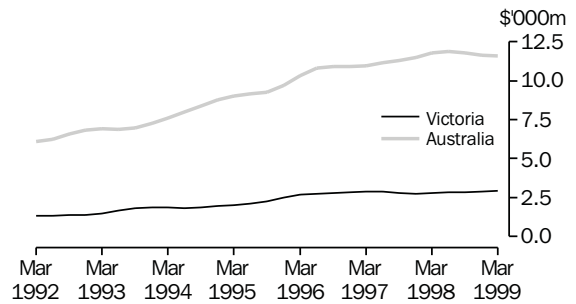
VALUE OF ALL BUILDINGS APPROVED, Trend—Monthly



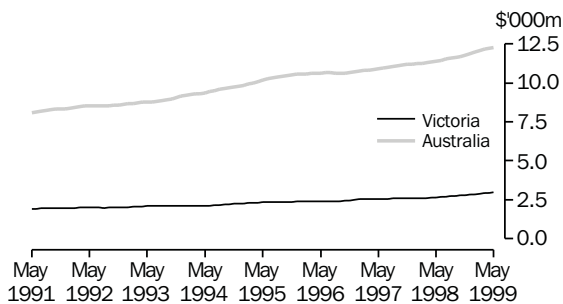
TOTAL VALUE OF SECURED HOUSING FINANCE COMMITMENTS TO INDIVIDUALS, Trend—Monthly



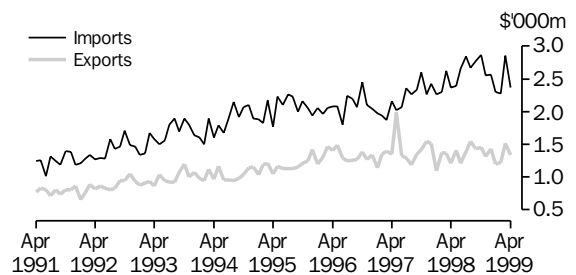
PRIVATE NEW CAPITAL EXPENDITURE, Trend—Quarterly



RETAIL TURNOVER, Trend—Monthly



MERCHANDISE IMPORTS AND EXPORTS, Original—Monthly



LIST OF TABLES

			Page
DEMOGRAPHY	1	Estimated resident population	5
	2	Births, deaths, marriages and divorces	5
LABOUR	3	Labour force status of the civilian population aged 15 years and over	6
	4	Employed persons, by industry	7
	5	Job vacancies	8
	6	Industrial disputes causing stoppage of work	8
WAGES AND PRICES	7	Average weekly earnings of employees	9
	8	Consumer Price Index—Melbourne	10
	9	Price Index of Materials Used in Building—Melbourne	10
MEAT PRODUCTION	10	Livestock slaughterings	11
	11	Meat production	11
BUILDING	12	Building approvals—Melbourne and Victoria	12
	13	New houses and other residential buildings, number of dwelling units	13
	14	Value of building	14
FINANCE	15	Private new capital expenditure, by selected industries and type of asset	15
	16	Commercial finance commitments	15
	17	Secured housing finance commitments	16
RETAIL	18	Retail turnover, by industry (excluding motor vehicles, parts, petrol, etc.)	16
TRADE	19	Exports and imports, by sections of the Australian Export and Import Classifications	17
	20	Overseas trade, major trading partners	17
	21	Value of overseas trade—Victoria and Australia	18
TOURISM	22	Tourist accommodation—Melbourne and Victoria	18

1

ESTIMATED RESIDENT POPULATION

Period	At end of period			Increase during period		Melbourne Statistical Division at 30 June(a)
	Males	Females	Persons	Natural	Total	
	'000	'000	'000	'000	'000	'000
1995-96	2 252.6	2 307.5	4 560.2	28.5	42.8	3 283.3
1996-97	2 275.2	2 330.0	4 605.2	28.7	45.1	3 321.8
1997-98 p	2 303.7	2 357.2	4 660.9	28.8	55.7	3 371.3
1997						
March qtr	2 271.6	2 327.0	4 598.6	7.5	15.1	..
June qtr	2 275.2	2 330.0	4 605.2	6.8	6.6	..
September qtr p	2 282.1	2 336.7	4 618.7	6.4	13.5	..
December qtr p	2 286.8	2 342.1	4 628.9	7.7	10.2	..
1998						
March qtr p	2 298.0	2 352.1	4 650.1	7.8	21.2	..
June qtr p	2 303.7	2 357.2	4 660.9	6.9	10.8	..
September qtr p	2 310.9	2 364.1	4 674.9	6.4	14.1	..
December qtr p	2 318.0	2 371.8	4 689.8	6.6	14.8	..

(a) Based on the 1998 Statistical Local Area boundaries.

Source: Australian Demographic Statistics (Cat. no. 3101.0) (quarterly).

2

BIRTHS, DEATHS, MARRIAGES AND DIVORCES

Period	Registrations				Annual rate per 1,000 of mean estimated resident population				
	Births	Deaths (including infant deaths)	Marriages	Divorces	Births	Deaths	Marriages	Divorces	Infant deaths per 1,000 live births
	no.	no.	no.	no.	rate	rate	rate	rate	rate
1995-96	61 324	32 827	26 117	12 002	13.51	7.23	5.75	2.64	5.30
1996-97	61 232	32 570	25 664	13 046	13.36	7.11	5.60	2.85	4.46
1997-98 p	61 146	32 320	25 957	11 916	13.21	6.98	5.61	2.57	4.82
1997									
March qtr	14 941	7 472	8 101	2 810
June qtr	14 973	8 131	6 000	3 308
September qtr p	15 671	9 225	3 822	3 164
December qtr p	15 595	7 908	7 533	3 181
Year—1997 p	61 180	32 736	25 456	12 463	13.28	7.11	5.53	2.71	5.08
1998									
March qtr p	15 055	7 269	8 531	2 663
June qtr p	14 825	7 918	6 071	2 908
September qtr p	15 550	9 131	3 913	3 188
December qtr p	15 193	8 614	7 860	3 548	—	—	—	—	—
Year—1998 p	60 623	32 932	26 375	12 307	13.00	7.07	5.66	2.64	4.85

Source: Demography, Victoria (Cat. no. 3311.2) (annual). Australian Demographic Statistics (Cat. no. 3101.0) (quarterly).

Month	Employed		Unemployed looking for work			Labour force	Not in labour force	Civilian population 15 years and over	Unemployment rate	Participation rate
	Full-time Total	Total	Full-time	Part-time	Total					
	'000	'000	'000	'000	'000	'000	'000	'000	%	%
MALES										
1998										
February	1 069.0	1 207.2	96.3	20.7	116.9	1 324.2	478.6	1 802.8	8.8	73.5
March	1 059.9	1 211.6	97.6	19.4	116.9	1 328.5	476.3	1 804.8	8.8	73.6
April	1 065.0	1 217.8	90.3	18.4	108.7	1 326.5	480.4	1 806.9	8.2	73.4
May	1 064.0	1 222.6	93.8	16.1	109.9	1 332.6	476.3	1 808.9	8.3	73.7
June	1 052.4	1 218.1	92.6	12.4	105.0	1 323.2	487.8	1 810.9	7.9	73.1
July	1 059.9	1 217.4	89.3	13.7	103.0	1 320.5	492.4	1 812.8	7.8	72.8
August	1 050.0	1 206.8	87.4	16.5	103.9	1 310.8	504.0	1 814.8	7.9	72.2
September	1 073.4	1 236.2	88.0	18.5	106.5	1 342.7	474.0	1 816.7	7.9	73.9
October	1 062.5	1 218.4	81.4	17.5	98.9	1 317.3	501.9	1 819.2	7.5	72.4
November	1 056.5	1 218.9	83.3	13.9	97.2	1 316.1	505.5	1 821.6	7.4	72.3
December	1 076.5	1 237.3	80.7	19.3	100.0	1 337.3	486.8	1 824.1	7.5	73.3
1999										
January	1 061.1	1 219.8	89.0	17.0	106.0	1 325.9	500.4	1 826.2	8.0	72.6
February	1 085.5	1 231.2	94.5	16.2	110.7	1 341.9	486.5	1 828.4	8.2	73.4
March	1 083.1	1 238.3	81.9	17.1	99.0	1 337.4	493.2	1 830.5	7.4	73.1
April	1 065.9	1 229.7	91.6	19.7	111.3	1 341.0	491.9	1 832.9	8.3	73.2
May	1 065.2	1 220.4	88.8	21.9	110.7	1 331.1	504.2	1 835.3	8.3	72.5
FEMALES										
1998										
February	528.5	917.9	63.1	27.9	91.0	1 008.9	875.7	1 884.6	9.0	52.4
March	521.8	929.6	61.2	32.8	94.0	1 023.5	863.0	1 886.5	9.2	53.5
April	533.1	941.7	57.4	29.0	86.3	1 028.0	860.5	1 888.5	8.4	54.3
May	524.2	939.0	55.2	24.5	79.6	1 018.6	871.8	1 890.4	7.8	54.4
June	524.3	945.7	53.1	30.8	83.9	1 029.6	862.8	1 892.3	8.1	53.9
July	536.9	944.8	54.0	29.0	83.0	1 027.8	866.5	1 894.3	8.1	54.4
August	537.9	954.2	50.4	31.0	81.4	1 035.7	860.6	1 896.3	7.9	54.3
September	535.2	957.8	58.2	32.0	90.2	1 048.0	850.2	1 898.2	8.6	54.6
October	530.6	942.7	47.3	27.1	74.4	1 017.2	883.4	1 900.6	7.3	55.2
November	520.1	941.0	49.8	27.2	77.0	1 017.9	885.0	1 902.9	7.6	53.5
December	543.7	954.0	48.4	27.0	75.4	1 029.4	875.9	1 905.3	7.3	54.0
1999										
January	533.9	915.4	52.2	24.0	76.2	991.6	915.7	1 907.2	7.7	52.0
February	531.6	929.5	54.6	32.1	86.7	1 016.2	893.0	1 909.2	8.5	53.2
March	525.8	936.6	48.1	32.2	80.3	1 016.9	894.3	1 911.2	7.9	53.2
April	520.0	936.8	45.6	28.2	73.8	1 010.6	902.9	1 913.5	7.3	52.8
May	520.3	940.0	43.5	28.0	71.5	1 011.5	904.4	1 915.9	7.1	52.8
PERSONS										
1998										
February	1 597.5	2 125.1	159.4	48.6	208.0	2 333.1	1 354.3	3 687.3	8.9	63.3
March	1 581.7	2 141.2	158.7	52.2	210.9	2 352.1	1 339.3	3 691.4	9.0	63.7
April	1 598.1	2 159.5	147.7	47.3	195.0	2 354.5	1 340.8	3 695.3	8.3	63.7
May	1 588.2	2 161.6	149.0	40.6	189.6	2 351.2	1 348.1	3 699.3	8.1	63.6
June	1 576.7	2 163.8	145.7	43.2	188.9	2 352.7	1 350.5	3 703.2	8.0	63.5
July	1 596.8	2 162.2	143.3	42.7	186.0	2 348.3	1 358.9	3 707.1	7.9	63.3
August	1 587.9	2 161.1	137.8	47.5	185.4	2 346.4	1 364.6	3 711.0	7.9	63.2
September	1 608.6	2 194.1	146.2	50.4	196.6	2 390.7	1 324.2	3 714.9	8.2	64.4
October	1 593.0	2 161.1	128.7	44.6	173.3	2 334.5	1 385.3	3 719.7	7.4	62.8
November	1 576.6	2 159.8	133.1	41.1	174.2	2 334.1	1 390.5	3 724.5	7.5	62.7
December	1 620.2	2 191.3	129.2	46.3	175.4	2 366.7	1 362.6	3 729.4	7.4	63.5
1999										
January	1 595.0	2 135.2	141.2	41.0	182.2	2 317.4	1 416.1	3 733.5	7.9	62.1
February	1 617.1	2 160.8	149.1	48.3	197.4	2 358.1	1 379.5	3 737.6	8.4	63.1
March	1 609.0	2 175.0	130.0	49.3	179.3	2 354.3	1 387.5	3 741.8	7.6	62.9
April	1 585.9	2 166.6	137.3	47.8	185.1	2 351.6	1 394.8	3 746.5	7.9	62.8
May	1 582.8	2 160.3	132.3	49.9	182.2	2 342.6	1 408.6	3 751.2	7.8	62.4

Source: Labour Force, Victoria (Cat. no. 6202.2) (quarterly).

4

EMPLOYED PERSONS, BY INDUSTRY

	Nov 1997	Feb 1998	May 1998	Aug 1998	Nov 1998	Feb 1999	May 1999
Industry division	'000	'000	'000	'000	'000	'000	'000
MALES							
Agriculture, forestry and fishing	55.3	67.3	61.7	52.0	51.8	57.9	58.6
Mining	*3.3	*3.1	*3.6	*2.2	5.3	*3.8	*3.1
Manufacturing	251.2	248.3	243.4	247.1	244.3	259.0	241.9
Electricity, gas and water supply	10.0	11.7	12.7	13.8	12.0	13.4	14.4
Construction	116.5	122.1	128.9	127.2	132.1	125.7	130.1
Wholesale trade	88.4	92.7	104.9	99.2	85.8	86.5	81.6
Retail trade	158.5	160.2	151.2	152.4	165.1	170.1	166.0
Accommodation, cafes and restaurants	37.7	32.2	39.8	41.2	39.9	42.4	41.7
Transport and storage	73.7	83.4	79.3	72.6	75.6	78.5	72.0
Communication services	22.5	22.2	22.3	25.1	26.4	28.5	27.8
Finance and insurance	46.5	42.6	40.3	43.9	50.4	45.4	43.4
Property and business services	131.7	131.1	135.6	149.7	148.4	138.3	154.3
Government administration and defence	38.4	37.5	36.2	35.9	31.4	28.6	28.8
Education	53.1	49.4	50.1	41.4	38.4	40.4	45.4
Health and community services	39.9	36.7	40.3	38.4	45.0	46.6	42.3
Cultural and recreational services	28.4	28.5	26.6	25.6	26.5	25.1	27.3
Personal and other services	42.8	38.5	45.7	39.3	40.3	41.2	41.5
Total	1 197.9	1 207.2	1 222.6	1 206.8	1 218.9	1 231.2	1 220.4
FEMALES							
Agriculture, forestry and fishing	30.7	35.1	31.7	26.5	25.3	28.8	26.8
Mining	*0.4	*0.3	*0.3	*0.8	*0.2	*0.0	*0.3
Manufacturing	107.7	95.5	98.4	95.3	91.4	98.3	98.1
Electricity, gas and water supply	*2.0	*2.6	*3.0	*3.7	*2.5	*2.7	*3.9
Construction	15.9	16.6	13.7	17.6	18.2	16.5	17.2
Wholesale trade	41.6	39.7	40.8	46.7	40.6	40.2	42.8
Retail trade	159.0	161.5	157.5	156.5	161.5	167.6	168.5
Accommodation, cafes and restaurants	48.0	46.6	49.2	49.2	49.9	43.8	44.6
Transport and storage	18.9	20.0	18.3	16.3	19.7	22.1	22.2
Communication services	16.0	14.3	12.5	13.9	13.2	10.9	14.0
Finance and insurance	42.2	40.7	48.4	54.9	51.2	45.1	37.3
Property and business services	102.2	106.0	108.9	108.4	112.1	108.0	108.9
Government administration and defence	42.1	34.2	35.8	40.2	40.5	38.2	38.7
Education	89.6	86.4	96.1	94.8	93.3	84.0	101.1
Health and community services	149.8	158.6	160.9	158.0	155.4	155.4	144.3
Cultural and recreational services	25.3	21.8	26.2	28.4	28.2	26.2	32.6
Personal and other services	35.1	38.0	37.2	42.8	37.8	41.5	38.7
Total	926.5	917.9	939.0	954.2	941.0	929.5	940.0
PERSONS							
Agriculture, forestry and fishing	86.0	102.4	93.4	78.5	77.1	86.6	85.3
Mining	*3.6	*3.4	*3.9	*3.1	5.6	*3.8	*3.4
Manufacturing	358.9	343.8	341.8	342.4	335.8	357.4	340.0
Electricity, gas and water supply	11.9	14.3	15.7	17.6	14.5	16.2	18.3
Construction	132.4	138.7	142.5	144.8	150.3	142.2	147.3
Wholesale trade	130.0	132.4	145.7	145.9	126.4	126.7	124.4
Retail trade	317.6	321.7	308.7	308.9	326.6	337.6	334.5
Accommodation, cafes and restaurants	85.8	78.8	89.1	90.4	89.8	86.3	86.3
Transport and storage	92.6	103.4	97.6	88.9	95.3	100.6	94.2
Communication services	38.5	36.5	34.8	39.0	39.6	39.4	41.9
Finance and insurance	88.8	83.3	88.7	98.7	101.6	90.5	80.7
Property and business services	233.9	237.0	244.5	258.1	260.5	246.3	263.3
Government administration and defence	80.4	71.7	72.0	76.1	72.0	66.8	67.5
Education	142.8	135.7	146.2	136.2	131.7	124.4	146.5
Health and community services	189.7	195.2	201.3	196.4	200.4	202.0	186.6
Cultural and recreational services	53.7	50.2	52.8	54.0	54.6	51.4	60.0
Personal and other services	78.0	76.5	82.9	82.1	78.0	82.8	80.2
Total	2 124.4	2 125.1	2 161.6	2 161.1	2 159.8	2 160.8	2 160.3

Source: Labour Force, Victoria (Cat. no. 6202.2) (quarterly).

5

JOB VACANCIES

Month	Vacancies all persons '000	Industry		Sector		Job vacancy rate %
		Manufacturing	Other	Public	Private	
		'000	'000	'000	'000	
1997						
November	*17.9	1.1	*16.8	2.3	*15.6	*0.97
1998						
February	24.0	*2.5	21.5	1.8	*22.1	1.20
May	20.2	2.2	18.0	1.5	18.7	1.00
August	17.6	0.8	16.8	1.9	15.7	0.84
November	26.9	*1.2	*25.7	1.9	25.0	1.30
1999						
February	12.5	*1.0	*11.5	*2.4	10.2	0.61
May	17.6	*1.9	*15.7	2.5	15.1	0.90

Source: Job Vacancies and Overtime, Australia (Cat. no. 6354.0) (quarterly); Unpublished data, Quarterly Survey of Job Vacancies and Overtime.

6

INDUSTRIAL DISPUTES CAUSING STOPPAGE OF WORK

Month	Disputes		Employees involved		Working days lost				
	Beginning in period	Total	Beginning in period	Total	Manufacturing	Construction	Education, health, community services	Other industries	Total
	no.	no.	'000	'000	'000	'000	'000	'000	'000
1998									
January	5	7	0.5	1.1	0.9	0.3	—	0.3	1.5
February	8	10	17.2	17.6	7.8	1.3	14.3	4.0	27.4
March	6	11	5.7	14.1	5.4	14.7	4.4	0.5	25.0
April	11	17	6.3	9.1	2.6	4.0	0.5	0.7	7.8
May	5	7	42.1	55.7	15.1	23.1	13.9	1.3	53.4
June	8	10	3.0	19.5	0.2	17.7	—	0.4	18.3
July	14	18	3.5	4.3	5.3	0.7	0.1	0.1	6.1
August	14	15	12.3	12.5	0.3	2.9	2.0	6.7	11.9
September	19	22	14.0	16.0	12.4	5.3	2.3	1.8	21.8
October	11	12	1.9	1.9	1.4	1.0	—	1.4	3.8
November	15	16	12.7	12.8	3.9	0.3	10.0	3.3	17.4
December	r 19	21	3.1	4.6	r 2.8	1.4	—	1.3	5.5
1999									
January	5	8	1.3	1.7	2.6	0.5	—	1.2	4.3
February r	16	19	2.5	3.7	1.2	1.5	—	1.7	4.5
March	29	32	3.6	4.2	7.3	1.0	0.0	1.3	9.6

Source: Industrial Disputes, Australia (Cat. no. 6321.0) (monthly).

7

AVERAGE WEEKLY EARNINGS OF EMPLOYEES

Month	Males			Females			Persons		
	Full-time adult ordinary time earnings	Full-time adult total earnings	All males total earnings	Full-time adult ordinary time earnings	Full-time adult total earnings	All females total earnings	Full-time adult ordinary time earnings	Full-time adult total earnings	All employees total earnings
	\$	\$	\$	\$	\$	\$	\$	\$	\$
1997									
November	748.50	807.60	714.90	632.90	653.10	463.60	708.10	753.60	600.60
1998									
February	762.20	823.10	722.00	634.90	650.70	477.70	716.80	761.60	610.40
May	767.60	825.30	701.50	646.30	660.40	470.40	724.80	767.00	596.30
August	770.90	826.30	704.30	650.20	662.70	475.60	728.00	768.20	600.90
November	781.80	842.10	716.80	657.40	673.30	473.90	736.30	780.30	602.40
1999									
February	769.20	823.70	710.90	658.10	673.20	474.40	729.00	769.20	600.30

Source: Average Weekly Earnings, States and Australia (Cat. no. 6302.0) (quarterly).

8

CONSUMER PRICE INDEX—MELBOURNE

Melbourne

<i>Period</i>	<i>Food</i>	<i>Clothing</i>	<i>Housing</i>	<i>Household equipment and operation</i>	<i>Transportation</i>	<i>Tobacco and alcohol</i>	<i>Health and personal care</i>	<i>Recreation and education</i>	<i>All groups</i>	<i>Weighted average of eight capital cities—All groups</i>
1995–96	114.1	108.0	101.4	113.0	122.6	154.2	148.7	120.3	118.4	118.7
1996–97	118.6	108.4	95.0	114.7	124.0	158.5	157.1	123.3	119.9	120.3
1997–98	120.5	108.9	86.5	115.0	123.3	161.4	162.2	127.6	119.8	120.3
1997										
December qtr	119.7	109.2	86.9	115.4	124.4	161.2	162.2	126.2	119.8	120.0
1998										
March qtr	120.7	109.0	84.1	115.1	122.1	162.0	163.6	129.4	119.6	120.3
June qtr	121.6	108.9	86.2	115.1	122.0	163.9	165.8	128.8	120.3	121.0
September qtr	123.6	108.9	85.3	115.3	121.0	165.0	166.7	128.4	120.4	121.3
December qtr	124.3	108.2	86.6	115.3	120.6	166.0	165.3	129.0	120.8	121.9
1999										
March qtr	125.8	107.5	87.3	114.7	119.9	167.6	155.7	131.0	121.0	121.8

Base of each group: year 1989–90=100.0

Source: Consumer Price Index (Cat. no. 6401.0) (quarterly).

9

PRICE INDEX OF MATERIALS USED IN BUILDING—MELBOURNE

1998–1999

<i>Group</i>	<i>1995–96</i>	<i>1996–97</i>	<i>1997–98</i>	<i>Sep qtr</i>	<i>Dec qtr</i>	<i>Mar qtr</i>	<i>Weighted average of six state capital cities—Mar qtr 1999</i>
House building							
All groups	115.4	115.3	117.1	118.6	118.1	117.7	119.5
Other than house building							
Structural timber	116.1	110.1	115.6	118.3	117.7	116.6	125.9
Clay bricks	112.1	113.1	117.9	119.7	119.6	119.6	119.3
Ready mix concrete	118.6	111.5	111.4	112.4	113.5	112.5	105.9
Precast concrete products	108.1	110.3	115.7	123.6	122.6	126.6	124.6
Steel decking and cladding	109.9	109.2	109.4	108.3	108.3	108.1	114.3
Structural steel	100.9	104.2	104.9	104.8	104.8	104.9	113.5
Reinforcing steel bar, mesh, etc.	102.7	100.7	100.8	100.3	99.9	99.1	109.6
Aluminium windows	100.8	100.6	100.0	99.7	100.0	100.1	110.5
Fabricated steel products	113.1	116.7	120.0	124.6	124.6	124.6	117.7
Builders' hardware	114.5	116.5	119.6	121.4	122.2	122.9	123.5
Sand and aggregate	114.6	115.9	116.3	119.6	119.6	121.3	122.2
Carpet	101.6	101.6	102.6	101.9	99.9	99.6	101.8
Paint and other coatings	141.2	145.8	144.7	148.6	155.0	154.9	144.2
Non-ferrous pipes and fittings	112.2	111.5	113.0	109.4	111.8	111.8	126.8
All groups excluding electrical materials and mechanical services	109.7	110.0	111.0	112.0	112.3	112.2	114.4
All electrical materials	119.4	112.0	109.8	108.6	111.8	114.3	118.7
All mechanical services	114.1	115.0	114.9	116.2	118.4	118.9	118.0
All plumbing materials	118.9	120.1	122.8	123.0	123.0	122.7	125.8
All groups	111.1	110.9	111.4	112.4	113.2	113.3	115.2

Base of each index: year 1989–90=100.0.

Source: Price Index of Materials Used in Building Other Than House Building, Six State Capital Cities (Cat. no. 6407.0) (quarterly). Price Index of Materials Used in House Building, Six State Capital Cities (Cat. no. 6408.0) (quarterly).

10

LIVESTOCK SLAUGHTERINGS

Period	Cattle	Calves	Sheep	Lambs	Pigs
	'000	'000	'000	'000	'000
1995-96	1 523.6	589.8	2 488.0	5 897.7	1 335.5
1996-97	1 675.9	697.3	2 806.6	5 978.9	1 397.2
1997-98	1 798.0	767.2	3 285.7	6 385.7	1 567.7
1998					
February	159.4	8.3	367.2	525.7	117.1
March	159.4	21.2	365.5	506.8	134.0
April	163.5	34.7	267.0	548.7	140.3
May	141.2	41.5	184.2	479.3	144.0
June	147.4	64.3	204.5	482.9	149.6
July	156.6	103.2	220.3	582.7	157.1
August	122.6	164.1	190.5	538.7	134.6
September	141.8	168.9	216.3	623.5	135.4
October	160.6	83.6	275.9	581.6	131.1
November	159.9	21.3	291.4	595.9	129.7
December	161.0	10.1	252.3	606.8	143.3
1999					
January	155.6	5.9	256.9	554.6	102.8
February	161.4	6.0	r 296.0	r 538.1	111.0
March	146.1	15.0	r 314.3	r 574.6	132.9
April r	128.4	24.5	263.9	510.4	126.2
May	141.7	45.8	267.0	464.7	135.2

Source: Livestock Products, Australia (Cat. no. 7215.0) (monthly prior to July 1998 and quarterly from September 1998); Unpublished data, Monthly Livestock Collection.

11

MEAT PRODUCTION

Period	Meat (carcass weight)				
	Beef	Veal	Mutton	Lamb	Pigmeat
	tonnes	tonnes	tonnes	tonnes	tonnes
1995-96	348 649	r 12 010	50 910	r 110 173	96 195
1996-97	373 819	14 293	55 545	111 403	99 226
1997-98	389 087	15 578	63 470	119 972	112 504
1998					
February	35 579	205	6 907	10 039	8 064
March	35 112	453	6 995	9 348	9 588
April	34 470	724	4 840	10 317	10 135
May	30 113	831	3 517	9 111	10 383
June	31 257	1 315	3 903	9 101	11 038
July	34 735	1 978	4 330	11 183	11 560
August	27 301	3 230	3 785	10 331	9 732
September	31 706	3 311	4 397	11 989	9 923
October	36 345	1 667	5 756	11 364	9 713
November	36 593	479	5 951	11 795	9 268
December	36 318	251	5 173	10 452	9 751
1999					
January	35 430	149	5 200	10 571	7 449
February r	38 184	153	5 815	10 339	8 035
March r	33 412	332	6 217	11 110	9 635
April r	30 382	497	5 103	9 785	9 511
May	31 294	916	5 197	9 027	10 162

Source: Livestock Products, Australia (Cat. no. 7215.0) (monthly prior to July 1998 and quarterly from September 1998); Unpublished data, Monthly Livestock Collection.

Period	New dwelling units(a)						Conversions etc.(d)	Alterations and additions to residential buildings	Non-residential building(b)		
	Private sector		Public sector		Total(c)				Private sector	Total	Total all building
	no.	\$m	no.	\$m	no.	\$m			\$m	\$m	\$m
MELBOURNE STATISTICAL DIVISION											
1995-96	15 676	1 624.3	1 068	86.5	16 744	1 710.8	617	467.2	1 352.5	1 934.5	4 112.5
1996-97	19 670	2 185.2	447	35.7	20 117	2 221.0	1 189	592.3	1 527.1	2 303.0	5 116.2
1997-98	26 490	3 026.5	723	56.0	27 213	3 082.6	1 029	701.2	2 168.2	2 593.0	6 376.8
1998											
February	2 032	219.7	25	2.0	2 057	221.7	65	56.1	137.7	165.8	443.5
March	2 633	288.4	11	0.7	2 644	289.1	77	69.3	104.0	117.6	476.0
April	2 480	296.4	55	3.7	2 535	300.0	47	66.1	172.9	254.2	620.3
May	2 246	267.7	122	9.3	2 368	277.0	224	72.9	223.9	265.6	615.5
June	2 237	279.3	91	7.4	2 328	286.7	64	57.1	110.6	173.9	517.7
July r	2 226	257.1	45	3.0	2 271	260.1	134	62.7	142.1	162.2	485.0
August	2 376	290.3	51	4.2	2 427	294.5	192	69.5	314.2	335.2	699.2
September											
October r	2 335	282.5	33	2.3	2 368	284.9	77	66.7	192.7	246.1	597.7
November r	2 287	300.5	74	5.0	2 361	305.5	51	69.6	216.5	457.2	832.4
December r	2 282	287.0	57	3.7	2 339	290.7	351	76.2	179.5	236.0	602.9
1999											
January r	2 524	302.7	54	5.7	2 578	308.4	145	60.5	107.1	133.7	502.6
February r	1 708	210.4	125	8.8	1 833	219.1	22	41.6	87.9	153.8	414.5
March r	2 775	353.4	51	3.1	2 826	356.5	229	73.7	109.3	206.7	636.9
April	2 554	326.1	37	4.0	2 591	330.1	103	75.3	159.7	226.8	632.3
	2 447	281.9	52	3.4	2 499	285.3	160	72.3	126.8	157.4	515.0
TOTAL VICTORIA											
1995-96	21 643	2 171.1	1 401	108.7	23 044	2 279.7	663	590.1	1 721.6	2 452.4	5 322.3
1996-97	26 014	2 793.3	596	46.7	26 610	2 839.9	1 240	728.5	1 879.7	2 839.8	6 408.2
1997-98	34 178	3 811.3	1 171	88.6	35 349	3 899.8	1 089	858.5	2 476.9	3 064.5	7 822.8
1998											
February	2 620	278.5	71	6.0	2 691	284.5	66	67.3	158.3	222.6	574.5
March	3 413	369.6	49	3.4	3 462	373.0	84	83.1	129.9	148.5	604.6
April	3 154	363.8	110	7.2	3 264	371.0	49	77.9	201.2	302.7	751.5
May	2 942	341.0	159	12.6	3 101	353.6	255	89.9	243.4	292.3	735.7
June	3 010	359.2	179	13.8	3 189	373.0	66	71.3	136.4	213.0	657.3
July	2 850	321.5	75	4.8	2 925	326.3	138	72.9	174.0	196.7	595.9
August	3 000	355.6	67	5.3	3 067	360.9	196	78.6	340.5	366.4	806.0
September	3 192	372.8	48	3.4	3 240	376.2	85	80.7	230.6	302.2	759.0
October	2 921	368.0	103	7.2	3 024	375.3	55	85.0	242.2	491.2	951.4
November	2 991	362.4	91	6.5	3 082	368.9	357	90.5	204.2	267.9	727.2
December	r 3 081	r 361.1	61	6.3	r 3 142	r 367.4	159	70.2	136.2	177.4	r 614.9
1999											
January	r 2 297	r 274.0	155	10.9	r 2 452	r 284.9	23	52.4	111.6	184.6	r 521.8
February	r 3 469	r 431.8	83	5.5	r 3 552	r 437.4	r 232	r 86.9	129.8	255.7	r 780.0
March	r 3 467	r 425.2	61	5.5	r 3 528	r 430.7	109	90.5	188.4	275.0	r 796.3
April	3 196	365.7	57	3.8	3 253	369.5	163	85.7	146.3	183.9	639.0

(a) Valued at \$10,000 and over.

(b) Valued at \$50,000 and over.

(c) Excludes dwelling units created as a result of conversions or construction of non-residential buildings.

(d) Dwelling units created as a result of conversions or construction of non-residential buildings.

Source: Building Approvals, Victoria (Cat. no. 8731.2) (monthly).

NEW HOUSES AND OTHER RESIDENTIAL BUILDINGS, NUMBER OF DWELLING UNITS

Period	New houses				New other residential buildings			
	Approved	Commenced	Under Construction	Completed	Approved	Commenced	Under Construction	Completed
	no.	no.	no.	no.	no.	no.	no.	no.
1995-96	18 889	19 399	8 066	21 883	4 155	4 276	3 906	3 086
1996-97	19 805	18 652	8 937	17 613	6 805	6 047	4 151	5 727
1997-98	27 937	25 947	12 503	22 271	7 412	7 509	5 095	6 497
1997								
September qtr	6 732	5 717	9 537	5 102	1 973	1 822	3 874	2 036
December qtr	6 821	7 088	10 720	5 842	1 754	1 958	4 104	1 725
1998								
March qtr	6 577	6 034	11 512	5 242	1 938	1 924	4 806	1 220
June qtr	7 807	7 165	12 368	6 239	1 747	1 894	5 148	1 561
September qtr	7 526	7 362	12 740	6 951	1 706	2 000	5 404	1 700
December qtr	6 873	7 335	13 353	6 722	2 249	1 550	5 060	1 889

Source: Building Activity, Victoria (Cat. no. 8752.2) (quarterly).

Period	Residential buildings		Non-residential buildings						Total
	New	Alterations and additions	Shops	Factories	Offices	Education	Health	Other	
	\$m	\$m	\$m	\$m	\$m	\$m	\$m	\$m	
COMMENCED									
1995-96	2 486.2	679.7	444.3	249.2	393.5	330.0	108.4	953.5	5 644.8
1996-97	2 692.2	761.0	348.2	343.8	508.5	410.3	303.6	1 003.3	6 371.1
1997-98	3 850.5	891.1	598.5	241.8	428.6	270.9	250.2	1 399.8	7 931.4
1997									
September qtr	845.8	228.4	80.4	58.3	123.8	55.2	46.1	245.8	1 683.7
December qtr	1 050.3	223.9	124.6	84.3	93.8	70.6	93.9	601.3	2 342.4
1998									
March qtr	870.9	187.0	134.1	54.1	91.8	65.7	42.6	327.7	1 774.0
June qtr	1 083.5	251.9	259.4	45.0	119.2	79.4	67.7	225.2	2 131.3
September qtr	1 126.0	221.9	111.3	54.9	102.5	132.6	26.7	225.3	2 001.3
December qtr	1 028.5	271.7	134.5	80.6	114.8	161.8	81.4	452.2	2 298.6
UNDER CONSTRUCTION AT END OF PERIOD									
1995-96	1 472.5	339.4	235.5	141.4	139.2	248.1	123.9	1 390.9	4 091.0
1996-97	1 582.3	358.5	284.6	214.9	233.4	310.0	236.2	1 741.7	4 961.6
1997-98	2 274.1	412.4	406.6	141.9	241.6	320.2	279.8	1 466.0	5 542.6
1997									
September qtr	1 669.2	388.8	175.4	167.4	193.9	343.2	245.6	920.7	4 104.1
December qtr	1 836.8	399.4	185.5	160.1	195.5	365.7	303.5	1 304.1	4 750.6
1998									
March qtr	2 040.0	366.6	210.4	157.6	208.5	307.4	244.8	1 442.2	4 977.5
June qtr	2 274.1	412.4	406.6	141.9	241.6	320.2	279.8	1 466.0	5 542.6
September qtr	2 426.8	412.1	461.0	124.2	237.1	420.3	210.4	1 464.6	5 756.6
December qtr	2 421.7	439.3	431.5	138.7	243.9	479.4	252.7	1 606.2	6 013.4
COMPLETED									
1995-96	2 489.6	689.0	715.1	249.9	514.1	302.2	234.7	844.4	6 038.9
1996-97	2 617.6	768.5	364.8	295.6	404.0	342.0	194.6	1 106.7	6 093.8
1997-98	3 213.6	866.6	474.7	338.4	449.4	283.2	208.2	1 738.4	7 572.4
1997									
September qtr	775.5	202.9	193.1	114.5	169.9	30.8	39.6	1 101.1	2 627.5
December qtr	886.3	219.3	114.6	94.8	102.1	53.7	39.3	236.9	1 747.1
1998									
March qtr	681.2	227.7	99.6	61.9	85.6	131.1	96.8	201.6	1 585.7
June qtr	870.5	216.7	67.4	67.2	91.8	67.6	32.4	198.6	1 612.1
September qtr	997.9	236.8	88.8	77.0	108.3	33.2	103.7	247.0	1 892.7
December qtr	1 052.6	251.8	175.9	67.8	127.4	103.4	42.6	303.4	2 124.9

Source: Building Activity, Victoria (Cat. no. 8752.2) (quarterly).

15

PRIVATE NEW CAPITAL EXPENDITURE, BY SELECTED INDUSTRIES AND TYPE OF ASSET

Period	Selected industries				Type of asset	
	Mining	Manufacturing	Other selected industries	Total	New buildings and structures	Equipment, plant and machinery
	\$m	\$m	\$m	\$m	\$m	\$m
ACTUAL						
1996-97	758	3 447	7 290	11 496	3 379	8 117
1997-98	833	3 401	6 810	11 044	2 859	8 186
1998						
March qtr	163	756	1 527	2 446	615	1 831
June qtr	212	965	1 822	2 998	765	2 233
September qtr	319	723	1 834	2 876	861	2 015
December qtr	288	r 779	r 1 906	r 2 973	r 820	r 2 153
1999						
March qtr	321	653	1 693	2 667	886	1 781
EXPECTED						
1998-99	1 340	3 362	7 060	11 761	3 460	8 301
1999-2000	631	3 008	4 587	8 227	1 754	6 473

Source: State Estimates of Private New Capital Expenditure (Cat. no. 5646.0) (quarterly).

16

COMMERCIAL FINANCE COMMITMENTS

Month	Fixed loan facilities						Type of lender			
	Construction	Purchase of real property	Purchase of plant and equipment	Wholesale	Other	Total	Revolving credit facilities	Total commitments	Banks	All other lenders
	\$m	\$m	\$m	\$m	\$m	\$m	\$m	\$m	\$m	\$m
1998										
February	116.4	425.5	119.7	118.4	722.3	1 502.3	2 150.7	3 653.0	2 757.5	895.5
March	220.0	446.7	161.1	91.2	505.5	1 424.6	1 773.0	3 197.7	2 508.2	689.5
April	75.1	418.1	121.5	90.5	744.2	1 449.3	2 033.0	3 482.4	2 496.7	985.6
May	124.6	489.7	117.5	157.3	1 263.6	2 152.7	1 592.5	3 745.2	3 129.8	615.4
June	100.3	628.8	140.0	115.5	1 154.9	2 139.5	1 440.2	3 579.8	3 085.4	494.4
July	112.8	527.1	156.0	100.2	1 112.3	2 008.4	2 243.1	4 251.5	3 570.6	680.9
August	87.4	391.1	113.9	169.3	451.3	1 212.9	2 182.6	3 395.5	2 912.4	483.1
September	113.1	461.6	185.7	78.8	714.5	1 553.6	1 488.9	3 042.5	2 438.7	603.8
October	85.2	461.3	181.2	91.0	441.0	1 259.8	2 389.8	3 649.6	2 889.9	759.7
November	184.9	456.8	182.7	148.7	1 031.2	2 004.4	1 394.7	3 399.1	2 857.4	541.7
December	68.8	477.2	208.3	269.3	956.5	1 980.1	2 742.8	4 722.9	3 681.9	1 041.1
1999										
January	38.8	358.9	138.8	51.2	461.8	1 049.5	1 220.7	2 270.3	2 102.2	168.0
February	90.4	384.5	176.4	74.5	852.9	1 578.6	2 593.6	4 172.2	3 081.1	1 091.2
March	110.5	477.6	190.6	329.7	1 220.7	2 329.2	r 2 467.0	r 4 796.2	r 3 984.1	r 812.2
April	82.5	467.9	171.1	79.0	501.9	1 302.4	1 361.9	2 664.3	2 104.1	560.2

Source: ABS Time Series Service (AUSSTATS).

17

SECURED HOUSING FINANCE COMMITMENTS, DWELLING UNITS

Month	Original series		Seasonally adjusted		Trend estimates	
	no.	\$m	no.	\$m	no.	\$m
1998						
February	9 961	1 028	10 141	1 069	10 026	1 058
March	10 197	1 080	9 846	1 035	10 029	1 057
April	9 780	1 011	9 875	1 035	10 025	1 058
May	9 986	1 063	10 019	1 062	9 977	1 056
June	11 123	1 183	10 355	1 098	9 887	1 053
July	10 629	1 155	9 819	1 067	9 756	1 046
August	9 249	1 013	9 311	1 014	9 637	1 043
September	9 637	1 041	9 418	1 021	9 553	1 048
October	9 649	1 060	9 438	1 046	r 9 540	r 1 066
November	9 513	1 109	10 027	1 129	r 9 659	r 1 103
December	9 860	1 160	9 646	1 145	r 9 903	r 1 156
1999						
January	8 095	983	10 361	1 247	r 10 208	r 1 216
February	9 727	1 154	9 892	1 198	r 10 532	r 1 274
March	r 12 455	r 1 520	r 11 335	r 1 377	r 10 857	r 1 329
April	11 089	1 355	11 482	1 417	11 158	1 377

Source: Housing Finance for Owner Occupation, Australia (Cat. no. 5609.0) (monthly).

18

RETAIL TURNOVER, BY INDUSTRY (EXCLUDING MOTOR VEHICLES, PARTS, PETROL, ETC.)

Month	Food retailing	Department stores r	Clothing and soft good retailing	Household good retailing	Recreational good retailing	Other retailing r	Hospitality and services	Total
	\$m	\$m	\$m	\$m	\$m	\$m	\$m	\$m
1998								
March	1 085.9	208.9	163.8	300.6	150.8	272.9	339.1	2 522.0
April	1 079.1	245.8	189.2	288.6	139.6	282.5	340.2	2 564.9
May	1 093.9	238.2	198.6	304.9	137.6	272.2	344.5	2 589.7
June	1 054.9	211.0	183.6	298.0	135.8	265.5	324.3	2 472.9
July	1 144.1	254.5	200.4	312.9	151.8	285.5	348.5	2 697.8
August	1 118.3	212.7	180.8	303.6	161.5	284.5	357.3	2 618.6
September	1 113.8	227.9	184.4	319.7	167.9	289.3	356.8	2 659.9
October	1 201.4	251.6	193.4	339.5	166.8	316.7	372.5	r 2 842.0
November	1 158.7	284.8	210.9	323.9	176.9	326.1	367.9	2 849.2
December	1 357.4	498.8	313.1	432.2	260.1	432.2	419.0	3 712.9
1999								
January r	1 210.5	224.5	187.8	329.5	167.8	276.4	386.5	2 783.1
February r	1 104.6	185.9	166.5	299.9	147.5	272.0	368.7	2 545.1
March r	1 219.1	233.5	214.1	317.3	164.0	331.8	413.3	2 893.0
April r	1 172.9	236.6	225.7	320.4	157.4	314.1	429.8	2 856.8
May	1 181.8	253.5	227.9	333.7	157.3	302.6	433.7	2 890.6

Source: Retail Trade, Australia (Cat. no. 8501.0) (monthly).

19

EXPORTS AND IMPORTS, BY SECTIONS OF THE AUSTRALIAN EXPORT AND IMPORT CLASSIFICATIONS(a)

Section	1997-98		11 months ending May 1999	
	Imports	Exports	Imports	Exports
	\$m	\$m	\$m	\$m
0 Food and live animals chiefly for food	1 171	3 656	1 204	3 622
1 Beverages and tobacco	127	159	123	153
2 Crude materials, inedible (except fuels)	566	1 866	547	1 314
3 Mineral fuels, lubricants, and related materials	783	938	996	699
4 Animal and vegetable oils, fats and waxes	92	111	95	100
5 Chemicals and related products, n.e.c.	2 958	915	2 982	890
6 Manufacturing goods classified chiefly by material	4 311	r 2 369	4 108	2 225
7 Machinery and transport equipment	12 438	r 2 969	12 274	2 638
8 Miscellaneous manufactured articles	5 008	978	4 934	950
9 Commodities and transactions of merchandise trade, n.e.c.	1 397	1 974	1 106	2 603
Total	28 851	15 935	28 369	15 194

(a) Any discrepancies between sums of the component items and totals are due to rounding.

Source: Foreign Trade Australia: Fasttraccs Database.

20

OVERSEAS TRADE, MAJOR TRADING PARTNERS(a)

Country	1996-97		1997-98		11 months ending May 1999	
	Imports	Exports	Imports	Exports	Imports	Exports
	\$m	\$m	\$m	\$m	\$m	\$m
Belgium-Luxembourg	242	66	243	91	220	90
Brazil	125	81	134	76	111	43
Canada	394	123	390	122	356	113
China	1 755	658	2 154	624	2 354	604
Fiji	119	236	133	245	165	209
Finland	169	8	193	12	168	8
France	711	162	631	168	571	123
Germany	1 923	280	2 116	268	2 144	382
Hong Kong	267	812	338	1 073	405	840
India	231	239	256	188	238	173
Indonesia	507	428	637	325	995	203
Italy	832	320	963	396	965	273
Japan	3 097	1 523	3 847	1 683	3 764	1 571
Korea, Republic of	671	2 098	882	1 039	721	772
Malaysia	508	669	668	517	777	395
Mexico	64	52	80	77	90	87
Netherlands	237	39	254	81	273	108
New Zealand	1 247	2 140	1 311	1 552	1 216	1 512
Pakistan	75	55	97	87	81	40
Papua New Guinea	232	269	163	235	59	175
Philippines	108	372	135	388	144	355
Saudi Arabia	203	168	107	210	96	291
Singapore	468	893	492	989	471	953
South Africa	100	292	147	272	111	200
Sweden	502	65	585	41	538	23
Switzerland	241	66	277	24	304	31
Taiwan	792	696	852	657	835	857
Thailand	335	412	400	341	477	309
United Kingdom	1 635	416	1 694	453	1 697	1 136
United States of America	5 944	958	7 027	1 603	6 334	1 335
Other and unknown	1 359	1 710	1 645	2 098	1 689	1 983
Total	25 093	16 306	28 851	15 935	28 369	15 194

(a) The list of countries in this table reflects the volume of trade with Victoria. Information about Victoria's trade with other countries is available on request.

Source: Overseas Trade: Fasttraccs Database.

21

VALUE OF OVERSEAS TRADE—VICTORIA AND AUSTRALIA

Period	Victoria			Australia		
	Imports	Exports	Excess of exports	Imports	Exports (including re-exports) r	Excess of exports
	\$m	\$m	\$m	\$m	\$m	\$m
1995-96	24 663	15 410	-9 253	77 792	76 005	-1 787
1996-97	25 093	16 306	-8 787	78 998	78 932	-66
1997-98	28 851	15 935	-12 916	90 684	87 769	-2 915
1998						
March	2 618	1 358	-1 260	8 188	7 312	-876
April	2 367	1 212	-1 155	7 446	7 198	-248
May	2 391	1 402	-989	7 657	7 943	286
June	2 657	1 209	-1 448	8 466	7 732	-734
July	2 841	1 379	-1 462	8 905	7 471	-1 434
August	2 669	1 541	-1 128	8 145	7 748	-397
September	2 772	1 430	-1 342	8 544	7 601	-943
October	2 871	1 449	-1 422	9 002	7 812	-1 190
November	2 552	1 314	-1 238	8 535	7 288	-1 247
December r	2 505	1 433	-1 072	7 820	7 895	75
1999						
January r	2 300	1 200	-1 100	7 231	6 301	-930
February r	2 275	1 220	-1 055	7 114	6 237	-877
March	2 856	1 508	-1 348	r 8 699	7 322	-1 377
April r	2 393	1 347	-1 046	7 730	6 425	-1 305
May	2 335	1 373	-962	7 761	6 975	-786

Source: Overseas Trade: Fastraccs Database.

22

TOURIST ACCOMMODATION

Quarter ended	Hotels, motels, guest houses and serviced apartments(a)						
	Establishments	Guest rooms	Bed spaces	Room nights occupied	Room occupancy rate	Persons employed	Takings from accommodation
	no.	no.	no.	'000	%	no.	\$'000
1997							
December	661	27 616	76 010	1 484.0	58.4	21 478	164 141
1998							
March	668	28 603	77 836	1 534.1	60.1	21 322	175 596
June	669	28 850	78 637	1 415.7	53.9	20 754	153 243
September	676	29 404	80 902	1 464.3	54.4	20 776	169 966
December	682	29 717	81 976	1 602.6	58.7	20 813	182 207
1999							
March	686	30 160	83 420	1 680.8	62.0	21 129	195 573

(a) Comprising establishments with 15 or more rooms or units.

Source: Tourist Accommodation, Australia (Cat. no. 8635.0) (quarterly).

SELF-HELP ACCESS TO STATISTICS

- CPI INFOLINE* For current and historical Consumer Price Index data, call 1902 981 074 (call cost 75c per minute).
- DIAL-A-STATISTIC* For the latest figures for National Accounts, Balance of Payments, Labour Force, Average Weekly Earnings, Estimated Resident Population and the Consumer Price Index call 1900 986 400 (call cost 75c per minute).
- INTERNET* www.abs.gov.au
- LIBRARY* A range of ABS publications is available from public and tertiary libraries Australia-wide. Contact your nearest library to determine whether it has the ABS statistics you require.

WHY NOT SUBSCRIBE?

- PHONE* +61 1300 366 323
- FAX* +61 03 9615 7848

CONSULTANCY SERVICES

ABS offers consultancy services on a user pays basis to help you access published and unpublished data. Data that is already published and can be provided within 5 minutes is free of charge. Statistical methodological services are also available. Please contact:

<i>INQUIRIES</i>	<i>City</i>	<i>By phone</i>	<i>By fax</i>
	Canberra	02 6252 6627	02 6207 0282
	Sydney	02 9268 4611	02 9268 4668
	Melbourne	03 9615 7755	03 9615 7798
	Brisbane	07 3222 6351	07 3222 6283
	Perth	08 9360 5140	08 9360 5955
	Adelaide	08 8237 7400	08 8237 7566
	Hobart	03 6222 5800	03 6222 5995
	Darwin	08 8943 2111	08 8981 1218

POST Client Services, ABS, PO Box 10, Belconnen ACT 2616

EMAIL client.services@abs.gov.au



2130320006999
ISSN 0158-202X

RRP \$16.00

© Commonwealth of Australia 1999

Produced by the Australian Bureau of Statistics